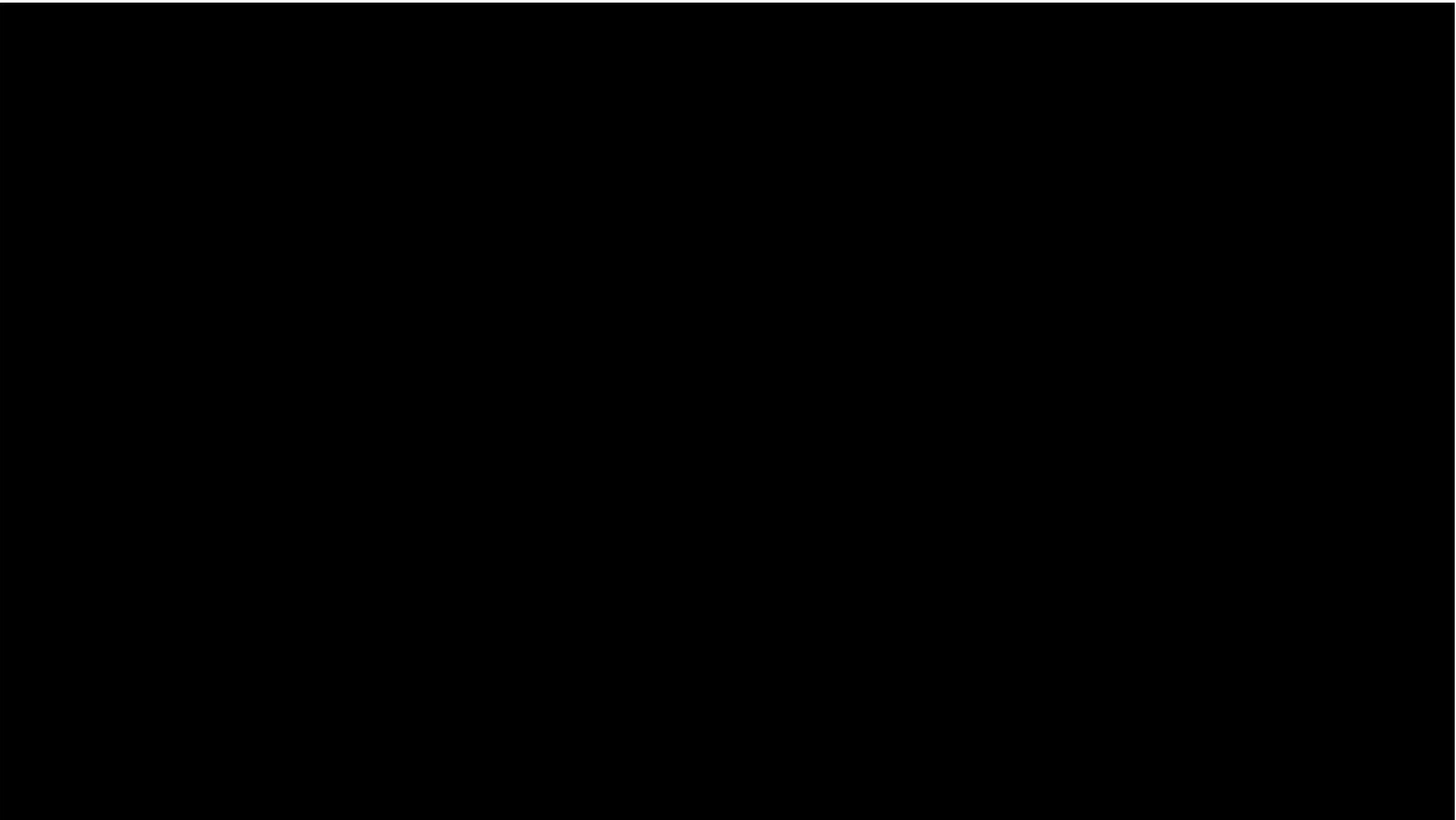


PARADOX



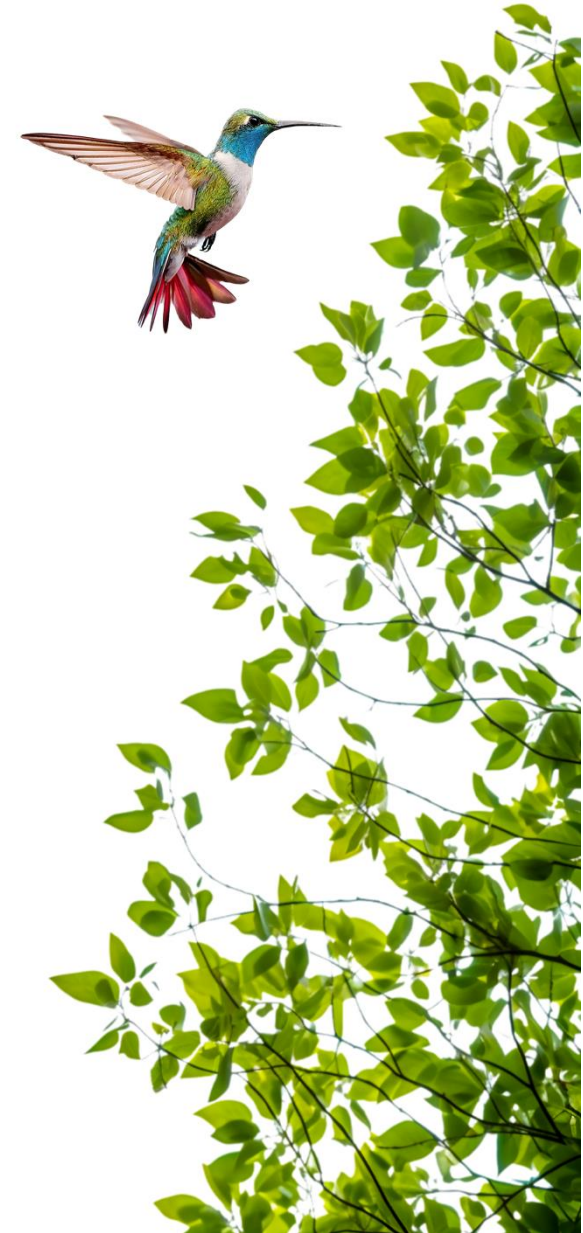
System Presentation





Agenda

- 1 Introduction
- 2 M System Overview
- 3 M25 Head Unit / Console
- 4 Ethernet/Wi-Fi Extender
- 5 Expanders
- 6 Keypads
- 7 Door Contacts
- 8 Detectors
- 9 Sound Devices
- 10 Remote Controls
- 11 Accessories
- 12 IP to CMS Converters
- 13 Portal
- 14 Mobile Application





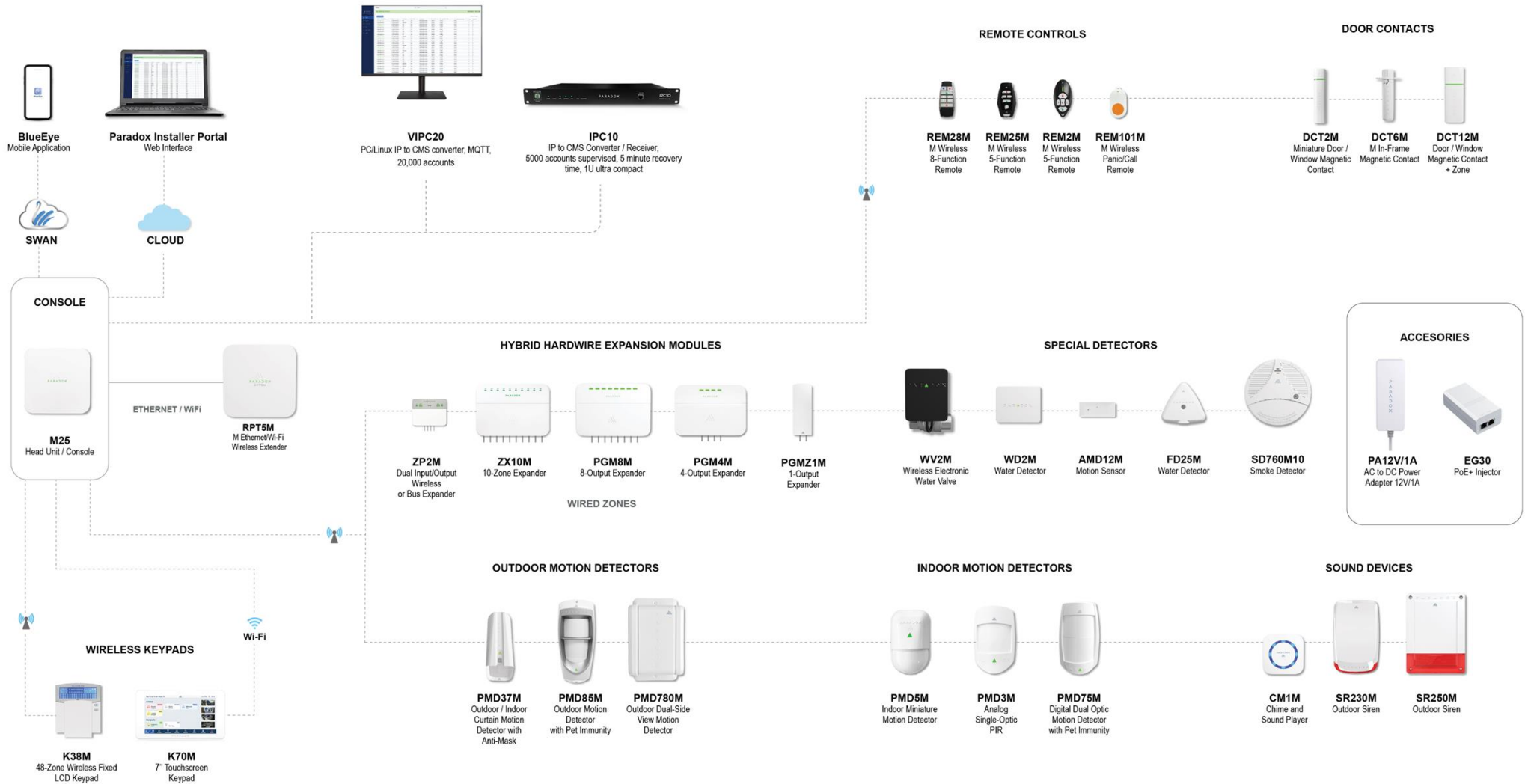
System



- The M System, centered around the Paradox M25 head unit, is a compact, high-security hybrid wireless/wired security platform designed for homes, business, and large apartments.
- It offers advanced GFSK wireless communication with encryption and frequency hopping, ensuring secure and fast connectivity between the head unit and the nodes installed in the system.
- Unlike cloud-dependent systems, it enables direct and supervised connections to the IPC10 and VIPC20 converters, minimizing points of failure.
- The M System is modular and expandable, it supports wireless, wired, and Ethernet expansions. It is fully scalable allowing for future upgrades to integrate video and access control.
- It uses a streamlined installation process via a single Cat6 cable for both power and Ethernet. It features multi-channel communication (Wi-Fi, LTE, and Ethernet). It provides a fast auto-learn feature for wireless and Ethernet devices via a user-friendly interface saving time and allowing for an easy and smooth installation.



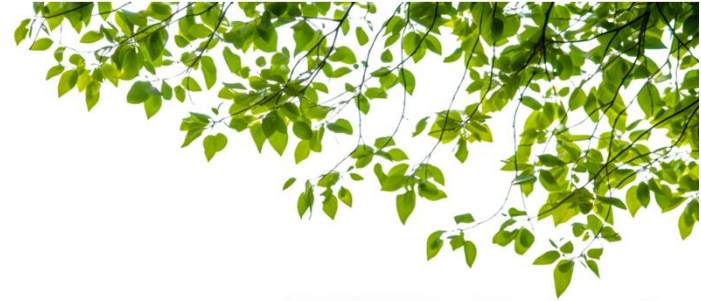
System Overview



M25 Head Unit/Console

Features

- Hybrid wireless console
- A variant of the Paradox M Head units
- Uses Gaussian Frequency Shift Keying (GFSK) technology
- Available in 868 (865.05 - 867.95) MHz or 914 (902.25 - 927.55) MHz; certain countries may have limited or different frequencies
- Advanced encryption and frequency hopping for enhanced security
- Supports up to 10 areas, 128 users, 200 zones, and 128 remotes
- Support for up to 75 nodes per system
 - Node type limits
 - K38M - maximum of 10
 - SR230M/SR250M - maximum of 10
 - RPT5M – maximum 4
- Temperature monitoring and control



M25

M25 Head Unit/Console

Communication & Connectivity

- Supports up to four simultaneous supervised connections to IPC10 and VIPC20 Converters
- Avoids third-party points of failure
- Expandable with wireless, Ethernet, or hard-wired devices
- Integration-ready for video monitoring, verification, and access control (coming soon)

Security & Authentication

- Uses Paradox fourth-generation cloud services
- Paradox identifier ecosystem for secure and fast system access
- BlueEye mobile application and Service Company / Dealers Portal integration
- Two-way authentication for enhanced security



M25 Head Unit/Console

Installation & Setup

- Simple and fast installation using a single Cat6 to RJ45 cable for PoE and Ethernet
- No need for a separate power supply or extra wiring
- Built-in Wi-Fi for primary/backup communication
- LTE as an additional communication channel for redundancy

Wireless & Ethernet Expansion

- Auto-learn feature for easy addition of wireless nodes or Ethernet extensions
- QR code scanning or manual serial number entry
- Saves time and effort during installation



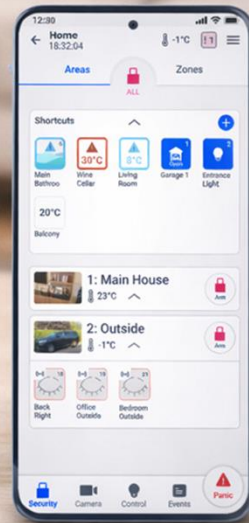
M25 Head Unit/Console

Programming & Upgrades

- Intuitive and user-friendly programming
- Application-based configuration or PC software(coming soon)
- Wireless modules connected to the M25 are fully supervised and upgradeable over the air
- Network devices upgradeable through Ethernet

Certifications & Compliance

- Certified under CE, FCC, and ETL
- Compliant with EN 50131-1, EN 50131-3, EN 50131-6, EN 50131-10, EN 50136-1, EN 50136-2 Grade 2, Class II standards



Technical Specifications

Specifications	Details
Power Supply	PoE (15.4W, 44V – 57V DC)
Wireless Type	GFSK with frequency and encryption hopping
RF Power	868 MHz band (+14 dBm), 914 MHz band (+22 dBm), coin battery devices limited to +14 dBm.
RF Frequency	868 (865.05 - 867.95) MHz or 914 (902.25 - 927.55) MHz; certain countries may have limited or different frequencies.
Battery	3.7V Lithium-ion battery, 5000 mAh
Battery Backup Time	26H on Ethernet, 24H on Wi-Fi, 20H on LTE
Operating Temperature	-25°C to 55°C (-13°F to 131°F) Battery charge disabled below -0°C and above +55°C internal temperature.
Ethernet/Wi-Fi	Built-in Wi-Fi – 2.4 GHz B/G/N
LTE	Built-in (LTE Model), main channel, or backup.
Users	128; one owner, masters, users, guests, and maintenance.
BlueEye Users Access	Optional, enabled by owner or master per user
JPEGs for User and Partition	Yes, from the gallery or camera
Areas	10
Bell Output	Only wireless
Total Zones	200
Remotes	128 maximum per system, up to four per user
Wireless Devices	75 per system
Adding Devices	Via auto-learn feature (wireless and Ethernet), QR scan, or manual serial number input for pre-programming.
Wireless Repeaters	Maximum of 4 per system. Ethernet or wireless
Programmable Outputs	Up to 48 with wireless expanders; regular, restricted to selected users, or installer-only.
PGM Activation	Controlled by manual activation, schedule, system events, sunset/sunrise, or temperature reading.
PGM Status Verification	PGM status with zone verification and timer-based error display per PGM.

Technical Specifications

Specifications	Details
Ethernet Expansion Devices	Up to 45 total: repeaters, keypads, cameras, and access modules
Video Verification	Up to 16 cameras (available soon)
Access Control	Up to 16 doors (available soon)
Arming Options	Stay, Sleep, and Full Arm
Auto Arm	On schedule or no movement
Auto Disarm	On schedule, Sleep to Stay, Stay to Disarm
Security Events	1000
Events when the System is Disarmed	1000 (available soon)
Automation Events	1000 (available soon)
Access Events	7500 (available soon)
Installation	By registered installer with Paradox Company ID (PCI) from BlueEye or Service Company Portal.
Service Company Access	Permanent access or as granted by System Owner.
Service Company Lock	Available. Enables automatically when the Service Company subscribes to the Swan service.
Service Company Portal	Available for all registered Service Companies/Installers with Paradox Company ID (PCI).
Temperature Display and Control	Site and areas temperature display, temperature activation for PGM (cool or heat), custom alerts via push notification and BlueEye message center display.
Cloud Services	Paradox Swan 4G (subscription required)
Reporting	Up to four converters, two channels with backup. Up to three transmission channels: Ethernet, Wi-Fi, and LTE.
Programming	Via BlueEye application or PC software
Dimensions	12.4W x 12.4H x 3.55D cm (4.89W x 4.89H x 1.4D in.)
Weight	0.26 kg
Certifications	CE, EN 50131-3, EN 50131-6, EN 50136-1, EN 50136-2, EN 50131-5-3, FCC 15.247

Ethernet/Wi-Fi Extender

RPT5M

- Range extender/repeater used to improve the range of your M System
- Retransmits information from the M system devices
 - 868 MHz – up to 1.5 km line of sight
 - 914 MHz – Up to 2.5 km line of sight
- Simplified installation with a single-cable PoE setup
- Up to 4 repeaters per system
- Fully supervised and upgradeable



RPT5M

Technical Specifications

Specification	Description
Power Supply	PoE, 10W max
Wireless Type	GFSK with frequency and encryption hopping
RF Power	868 MHz band (+14 dBm), 914 MHz band (+30dBm or +22 dBm)
RF Frequency	868 (865.05 - 867.95) MHz or 914 (902.25 - 927.55) MHz, certain countries may have limited or different frequencies.
Battery	3.7V Lithium-ion battery, 5000 mAh
Battery Backup Time	26H on Ethernet, 24H on Wi-Fi
Firmware Upgrade	Via BlueEye app (an internet connection is required)
Operating Temperature	-25°C to 55°C (-13°F to 131°F) Battery charge disabled below 0°C and above +55°C internal temperature
Ethernet/ Wi-Fi	Built-in Wi-Fi – 2.4 GHz B/G/N
Remotes	Follow Console
Wireless Devices	75 per system
Adding Devices	Via auto-learn feature or manual
Installation	By a registered installer with Paradox Company ID (PCI) from BlueEye or Service Company Portal.
Programming	via BlueEye application or PC software
Dimensions	12.4W x 12.4H x 3.55D cm (4.89" W x 4.89" H x 1.4" D)
Weight	0.26 Kg
Certifications	CE, EN 50131-3, EN 50131-6, EN 50131-5-3, Security Grade – 2, Environmental Class – II, FCC 15.247 Type of PS – Type A

Expanders

ZX10M

- Allows adding more hardwired zone inputs (e.g., sensors like door contacts, motion detectors, etc.)
- Useful when your main panel has limited zone inputs
- Wireless 10-zone input expander
- Input 1 can be configured as a fire zone
- 12V power, rechargeable 2 x lithium 5000mAh backup batteries
- 12-hour battery backup @ 180 mA auxiliary output, auxiliary maximum 400 mA
- Temperature sensor
- Supports input with no EOL resistor, single EOL resistor, or dual EOL resistors



ZX101M

Technical Specifications

Specification	Description
Power Input	12-14.0VDC/1A
Wireless type	GFSK two-way with frequency and encryption hopping
RF Frequency	868 (865.05 - 867.95) MHz or 914 (902.25 - 927.55) MHz Might vary in different countries.
RF power	868 MHz: +14 dBm radiated, 914 MHz: +22 dBm in permitted countries.
Number of Inputs	10
Input connection type	Two wires, No EOL, 1EOL A (1K ohm), 1EOL B (1K ohm), 2EOL (2 x 1K ohm), Zone one can be set as two-wire smoke.
Status Indicators in Application	Zone open/close, tamper status, power supply, battery level, temperature, TX/RX values
Status Indication	Logo: online, offline, battery or power operation, upgrade in process, tamper, zone LEDs - open/close
Battery	2 x 3.7V Li-ion battery, 5000mAh
Aux Output Supply	12.5 - 13.8V, rated at 220 mA (12 hours battery backup at 180 mA), auxiliary maximum 400 mA
Transmission Time	Less than 20ms
Supervision Time	20 minutes, 10 minutes (Default), and 3 minutes
Installation Environment	Indoor
Firmware Upgrade	Remotely over the air, via BlueEye, about 2 minutes after start delay, delay up to supervision time, or any action on ZX10M.
Operating Temperature	-20°C to 50°C (-4°F to 122°F) Battery charging: 0°C to 40°C (32°F to 104°F)
Auto Learn	Yes
Colors	White
Dimensions	18W x 13H x 4.5D cm (7.09W x 5.12H x 1.79D in.)
Weight	0.41 Kg
Certification	CE, EN 50131-3, EN 50131-5-3, Security Grade – 2, Environmental Class – II, FCC 15.247

Expanders

ZP2M

- Dual zone inputs and dual relay outputs
- Two garage door controller
- 1 x 3.7V Li-ion rechargeable battery, 1000mAh
- Supports input with no EOL resistor, single EOL resistor, or dual EOL resistors



ZP2M

Technical Specifications

Specification	Description
Power Input	12VDC/500 mA min. (power pack or M console aux)
Device Input Current	200 mA Max
Power consumption	2.4 W Max
Bus Connection	M-Bus encrypted RS-485, Up to 1,000ft
Battery	1 x 3.7V Li-ion rechargeable battery, 1000 mAh, 2 hours backup @100 mA aux. 15 mA load required to power aux.)
Aux Output Supply	11 VDC, 100 mA
Wireless Type	GFSK two-way with frequency and encryption hopping
RF Frequency	868 (865.05 - 867.95) MHz or 914 (902.25 - 927.55) MHz It might vary in different countries.
RF Power	868 MHz: +14 dBm radiated; 914 MHz: +22 dBm in permitted countries
Number of Inputs	Two fully programmable zones or signaling inputs
Input Connection Type	No EOL, 1EOL or two EOL (1K ohm)
Number of Outputs	Two relay outputs 24V/1A, normally open or close, configurable
Application Status indication	Zone open/close, Output open/close, tamper status, power available, battery level, temperature, TX/RX values, wireless or Bus connection
ZP2M Status Indication	Logo: Bus or wireless, online, offline, battery or power operation, upgrade in process, tamper, zone LEDs - open/close, Output Active or not
Transmission Time	Less than 20 ms
Supervision Time	20 minutes, 10 minutes (default), and 3 minutes
Installation Environment	Indoor
Humidity	93% maximum (ULC)
Firmware Upgrade	Remotely via bus or over the air M wireless

Technical Specifications

Specification	Description
Operating Temperature	-20°C to 50°C (-4°F to 122°F) Battery charging: 0°C to 40°C (32°F to 104°F)
Auto Learn	Yes
Colors	White
Dimensions	8.7W x 6.9H x 3D cm (3.4" W x 2.7" H x 1.2" D)
Certification	CE, EN 50131-3, EN 50131-5-3, Security Grade – 2 Wireless, Grade 3 Bus, Environmental Class – II, FCC 15.247

Expanders

PGM8M

- Allows adding PGM outputs to the system for controlling devices (e.g., garage doors, gates, lights, external hardwired sirens, etc.)
- Wireless 8-programmable outputs (N.O./N.C. programmed via the BlueEye app.)
- 24V/1A max switched each output
- Manual control for each output
- Temperature sensor
- 12V power, rechargeable lithium battery up to 10 days, 5000mAh (optional)



PGM8M

Technical Specifications

Specification	Description
Power Input	12-13.8VDC/1A
Wireless type	GFSK two-way with frequency and encryption hopping
RF Frequency	868 (865.05 - 867.95) MHz or 914 (902.25 - 927.55) MHz Might vary in different countries.
RF power	868 MHz: +14 dBm radiated, 914 MHz: up to +22 dBm in permitted countries.
Number of Outputs	8
Status Indicators in Application	Output status indications, tamper status, power supply, battery level, temperature, TX/RX values
Status Indication	Logo: online, offline, battery or power operation, upgrade in process, tamper, Output status indicators: activated/deactivated
Battery	1 x 3.7V Li-ion battery with up to 10 days of battery life, 5000mAh
Transmission Time	Less than 20ms
Supervision Time	20 minutes, 10 minutes (Default), and 3 minutes
Installation Environment	Indoor
Firmware Upgrade	Remotely over the air, Via BlueEye, about 2 minutes after start delay, delay up to supervision time or any action on PGM8M
Operating Temperature	-20°C to 50°C (-4°F to 122°F) Battery charging: 0°C to 40°C (32°F to 104°F)
Auto Learn	Yes
Colors	White
Dimensions	18W x 13H x 4.5D cm (7.09W x 5.12H x 1.79D in.)
Weight	0.36 kg with battery
Certification	CE, FCC 15.247

Expanders



PGM4M

- Allows adding PGM outputs to the system for controlling devices (e.g., garage doors, gates, lights, external hardwired sirens, etc.)
- Wireless 4-programmable outputs
- 24V/1A max switched each output
- Manual control for each output
- Temperature sensor
- 12V power, rechargeable lithium battery up to 10 days, 5000mAh (optional)



PGM4M

Technical Specifications

Specification	Description
Power Input	12-13.8VDC/1A
Wireless type	GFSK two-way with frequency and encryption hopping
RF Frequency	868 (865.05 - 867.95) MHz or 914 (902.25 - 927.55) MHz Might vary in different countries.
RF power	868 MHz: +14 dBm radiated, 914 MHz: up to +22 dBm in permitted countries.
Number of Outputs	4
Status Indicators in Application	Output status indications, tamper status, power supply, battery level, temperature, TX/RX values
Status Indication	Logo: online, offline, battery or power operation, upgrade in process, tamper, Output status indicators: activated/deactivated
Battery	1 x 3.7V Li-ion battery with up to 10 days of battery life, 5000mAh
Transmission Time	Less than 20ms
Supervision Time	20 minutes, 10 minutes (Default), and 3 minutes
Installation Environment	Indoor
Firmware Upgrade	Remotely over the air, Via BlueEye
Operating Temperature	-20°C to 50°C (-4°F to 122°F) Battery charging: 0°C to 40°C (32°F to 104°F)
Auto Learn	Yes
Colors	White
Dimensions	18W x 13H x 4.5D cm (7.09W x 5.12H x 1.79D in.)
Weight	0.36 kg with battery
Certification	CE, FCC 15.247

Expanders

PGMZ1M

- One programmable wireless output relay and one zone input
- 24V/1A max switched output
- Temperature sensor
- 12V power



PGMZ1
M



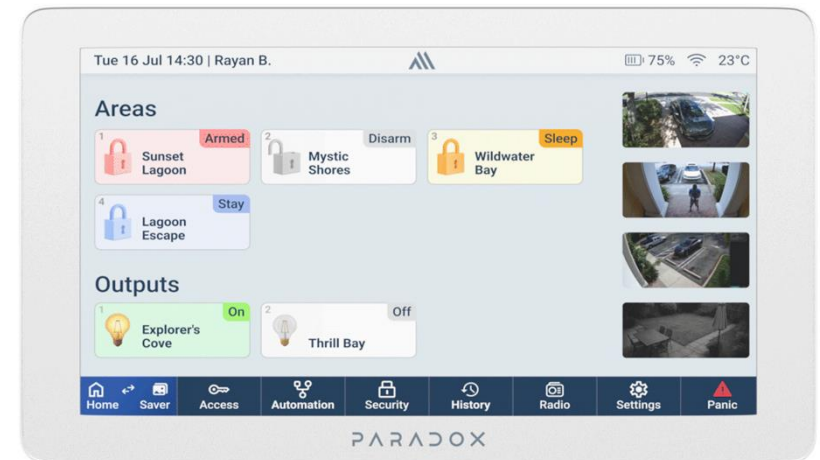
Technical Specifications

Specification	Description
Power Input	AC/DC 5-16V, 300mA minimum
Wireless type	GFSK two-way with frequency and encryption hopping
RF Frequency	868 (865.05 - 867.95) MHz or 914 (902.25 - 927.55) MHz Might vary in different countries.
RF power	868 MHz: +14 dBm radiated, 914 MHz: up to +22 dBm in permitted countries.
Number of Outputs, Inputs	One relay output 24V/1A One zone input
Status Indicators in Application	Output status indications, tamper status, power supply, temperature, TX/RX values
Transmission Time	Less than 20ms
Supervision Time	20 minutes, 10 minutes (Default), and 3 minutes
Installation Environment	Indoor/Outdoor
Firmware Upgrade	Remotely over the air, via BlueEye, about 2 minutes after start delay.
Operating Temperature	-30°C to 50°C (-22°F to 122°F)
Auto Learn	Yes
Colors	White
Dimensions (H x W x D)	4.6W x 12.45H x 3.3D cm (1.8W x 4.9H x 1.3D in.)
Weight	77 g
Certification	CE, FCC 15.247

Keypads

K70M Touchscreen

- 7" touch keypad
- Security, cameras, automation, internet radio with external speaker output
- Wi-Fi B/G/N connectivity to console
- Brilliant, vivid, high-quality display (1024 x 600 display)
- Built-in lithium battery with up to 6 hours of battery life
- 12V DC, minimum 500 mA input, two wire connection
- Slim, easy to install



K70M

Technical Specifications

Specification	Description
Input Power Supply	12 V DC, minimum 500 mA
Display	1024 × 600 color touch display
Speakers	Internal and External
Audio Output Power	4 W RMS for background music
Status Indicators in Application	Power supply, battery level, temperature
M System Connectivity	Wi-Fi (2.4 MHz)
Battery	Built-in rechargeable battery providing up to 12 hours of operation
Installation Environment	Indoor
Firmware Upgrade	Through the Swan server (only through Wi-Fi)
Operating Temperature	-5°C to 45°C (23°F to 113°F)
Auto Learn	Yes
Colors	White, Grey
Dimensions	19.50W x 11.28H x 1.74D cm (7.7" W x 4" H x 0.7" D)
Weight	0.46 kg
Certification	CE, FCC 15.247

Keypads

K38M Keypad

- Wireless icon display keypad
- RF connectivity to console
- 48 zones, 2 partitions
- 4 PGM activation keys
- Panic control
- Night illumination
- Temperature sensor



K38M

Technical Specifications

Specification	Description
Power Input	6 to 14 VDC, 100 mA (minimum)
Wireless Type	GFSK two-way with frequency and encryption hopping
RF Frequency	868 (865.05 - 867.95) MHz or 914 (902.25 - 927.55) MHz Might vary in different countries.
Number of Supported Zones	48
RF Power	868 MHz up to +14 dBm radiated, 914 MHz up to +22 dBm in permitted countries
Status Indicators in Application	Power supply, battery level, temperature, TX/RX values
Battery	2 x AA lithium, 6+ years of battery life with normal usage
Transmission Time	Less than 20 ms
Supervision Time	20 minutes, 10 minutes (Default), and 3 minutes
Installation Environment	Indoor
Firmware Upgrade	Remotely over the air, Via BlueEye, takes approximately 2 minutes to complete after the transfer begins Battery-powered mode: a delay of up to 2 seconds before the panel starts transferring the firmware Plugged-in mode: The firmware transfer starts immediately
Operating Temperature	-20°C to +50°C (-4°F to 122°F)
Auto Learn	Yes
Colors	White
Dimensions	12.3W x 14.4H x 3.2D cm (4.9" W x 5.7" H x 1.3" D)
Weight	0.26 kg
Certification	CE, FCC 15.247

Door Contacts

DCT12M

- 10+ years of battery life with normal usage
- Two zones – magnet and wired input
- LED indication for door open, closed, and device's connected status
- Temperature sensor
- Supports input with no EOL resistor, single EOL resistor, or dual EOL resistors

DCT2M

- 6+ years of battery life with normal usage
- Magnetic door contact – detects when a door is open or closed using a magnetic sensor
- Ultra-small size – compact design that fits easily on any door or window
- LED indication for door open, closed, or if the device is connected
- Quick and simple to install, no special tools needed
- Temperature sensor

DCT6M

- 6+ years of battery life with normal usage
- In-frame installation on door and windows, designed to fit inside the frame for a clean, hidden look
- Slim, ultra-small and easy to install
- Temperature sensor



DCT12M



DCT2M



DCT6M

Technical Specifications

Specification	DCT12M	DCT2M	DCT6M
Wireless Type	GFSK two-way with frequency and encryption hopping		
RF Frequency	868 (865.05 - 867.95) MHz or 914 (902.25 - 927.55) MHz Certain countries may have limited or different frequencies.		
RF power	868 MHz up to +14 dBm radiated, 914 MHz up to +22 dBm in permitted countries		
Close Distance of the Magnet	Less than 1 cm (0.4 in.)		2.0 cm (0.8 in.)
Open Distance of the Magnet	Above 2 cm (0.8 in.)	Above 3 cm (1.1 in.)	2.3 cm (0.9 in.)
Transmission Time	Less than 20 ms		
Supervision Time	20 minutes, 10 minutes (Default), and 3 minutes		20 minutes
Input Connection Type	No EOL, 1 EOL A (47 kilo ohm), 1 EOL B (47 kilo ohm), 2 EOL (2 x 47 kilo ohm)	-	-
Status Indicators	Battery, temperature, TX/RX values		
Battery	ER17335, 10+ years of battery life	1 x CR123, up to 5 years of battery life	1 x AAA, up to 5 years of battery life
Installation Environment	Indoor		
External Contact Cable (maximum resistance)	Up to 50-ohm resistance	-	-
Firmware Upgrade	Remotely over the air, via BlueEye		
Operating Temperature (with lithium batteries)	-30°C to 50°C (-22°F to 122°F)	-20°C to 50°C (-4°F to 122°F)	
Auto Learn	Yes		
Colors	White, Brown, Grey		White, Brown
Dimensions	2W x 9H x 2D cm (¾W x 3.5H x ¾D in.)		2.1W x 7.3H x 2.1D cm (0.8W x 2.8H x 0.8D in.)
Weight (including battery)	Sensor 47 g/ Magnet 12g	Sensor 33 g/ Magnet 12g	Body 20 g, Magnet 10 g
Certification	CE, EN 50131-2-6, EN 50131-6, EN 50131-5-3, FCC 15.247, Security Grade – 2, Environmental Class – II Type of Power Supply – Type C		CE, EN 50131-2-6, EN 50131-6, EN 50131-5-3, FCC 15.247, Security Grade – 2, Environmental Class - II

Detectors



WV2M

- 6+ years battery life
- Stainless steel 304 body, floating ball for leak prevention
- Valve control for water
- IP65 rated
- Manual override for opening/closing control and visual position indicator
- Up to test cycle every two weeks of unuse - prevents valve malfunction
- Follows WD2M, schedules or system events

WD2M

- 10+ years of battery life
- IP67 rated – fully dust-tight and waterproof
- Easy installation with magnetic bracket and magnet device turn on
- Pairs with the WV2M valve controller or M PGM for automatic shut-off protection
- Gold-plated sensors – corrosion-free, long-lasting detection



WV2M



WD2M

Technical Specifications

Specification	WV2M
Wireless Type	GFSK two-way with frequency and encryption hopping
RF Frequency	868 (865.05 - 867.95) MHz or 914 (902.25 - 927.55) MHz May vary by region.
RF Power	868 MHz up to +14 dBm radiated, 914 MHz up to +22 dBm in permitted countries.
Status Indicators in Application	Battery, temperature, TX/RX values, open/close
Opening or Closing Time	<ul style="list-style-type: none"> Valve mechanical operation – approximately 6 seconds Valve LED status update – approximately 12 seconds Status update in the app – 14 seconds (depends on the communication speed between the panel and server.)
Battery	2 x ER17335; 6+ years of battery life
Humidity Range	Up to 95%
Transmission Time	Less than 20 ms
Supervision Time	20 minutes, 10 minutes (default), and 3 minutes
Installation Environment	Indoor/Outdoor
Firmware Upgrade	Remotely over the air, via BlueEye
Operating Temperature	-20°C to 45°C (-4°F to 113°F)
IP Rating	IP65 for wireless control unit, IP67 for valve
Auto Learn	Yes
Colors	Black
Dimensions	7.7W x 11.2H x 9D cm (3" W x 4.4" H x 3.5" D)
Weight	WV2M (1") = 0.673 kg WV2M (1/2") = 0.455 kg WV2M (3/4") = 0.543 kg
Certification	CE, FCC 15.247

Specification	WD2M
Detection	Water, oil
Wireless Type	GFSK two-way with frequency and encryption hopping
RF Frequency	868 (865.05 - 867.95) MHz or 914 (902.25 - 927.55) MHz May vary by region.
RF Power	868 MHz up to +14 dBm, radiated. 914 MHz up to +22 dBm in permitted countries.
Transmission Time	Less than 20 seconds
Supervision Time	20 minutes, 10 minutes (default), and 3 minutes
Status Indicators	Battery, temperature, TX/RX values, open, close
Battery	1 ER17335 lithium battery, 10+ years of battery life before replacement
Installation Environment	Indoor
Firmware Upgrade	Remotely over the air, via BlueEye
Operating Temperature	-30°C to 50°C (-22°F to 122°F)
IP Rating	IP67
Auto Learn	Yes
Colors	Grey, White
Dimensions	6.5W x 5.3H x 2.2D cm (2.6" W x 2" H x 0.9" D)
Weight	77g
Certification	CE, FCC 15.247

Detectors

FD25M

- Water detection
- Sound alert
- 6+ years of battery life with normal usage
- Temperature sensor
- Control water supply valve (not included)

SD760M10 EN

- High-sensitivity photoelectric smoke detector
- Built-in alarm siren
- Test fire alarm button
- 1 x CR123 lithium battery
- 10 years of battery life with normal usage
- Temperature sensor



FD25
M



SD760M10

Technical Specifications

Specification	FD25M	SD760M10
Wireless Type	GFSK two-way with frequency and encryption hopping	
RF Frequency	868 (865.05 - 867.95) MHz or 914 (902.25 - 927.55) MHz May vary by region.	
RF Power	868 MHz up to +14 dBm radiated, 914 MHz up to +22 dBm in permitted countries.	
Transmission Time	Less than 20 ms	
Supervision Time	20 minutes, 10 minutes (Default), and 3 minutes	
Status Indicators	Battery, temperature, TX/RX values	
Battery	1 x CR123 lithium 6+ years of battery life with normal usage	1 x CR123 lithium 10 years of battery life with normal usage
Installation Environment	Indoor	
Firmware Upgrade	Remotely over the air, via BlueEye	
Operating Temperature	-30°C to +50°C (-22°F to 122°F) Works below 4°C as long as the liquid is not frozen (Detection functions only when the liquid is above its freezing point)	
Auto Learn	Yes	
Colors	White	
Dimensions	8.9W x 8.4H x 2.3D cm (3.5" W x 3.3" H x 0.9" D)	12 Ø x 4.6 cm (4.8" Ø x 1.9")
Weight	70 g	0.21 kg
Certification	CE, FCC 15.247 Type of Power Supply – Type C	CE, EN 14604, FCC 15.247

Detectors

ADM12M

- Three-axis accelerometer sensor
- Sensitivity level control
- Detection based on the number of seconds of constant motion
- 3+ years of battery life with normal usage
- Temperature sensor
- Easy and fast installation



ADM12M

Technical Specifications

Specification	Description
Wireless Type	GFSK two-way with frequency and encryption hopping
Sensor Type	Three-axis accelerometer
RF Frequency	868 (865.05 - 867.95) MHz or 914 (902.25 - 927.55) MHz May vary by region.
RF Power	868 MHz up to +14 dBm radiated, 914 MHz up to +14 dBm maximum, power managed.
Transmission Time	Less than 20 ms
Supervision Time	20 minutes
Status Indicators	Battery, temperature, TX/RX values
Battery	1 x CR2032 lithium, 3+ years of battery life with normal usage.
Installation Environment	Indoor
Firmware Upgrade	Remotely over the air, via BlueEye
Operating Temperature	-20°C to +50°C (32°F to 122°F)
Auto Learn	Yes
Colors	White, Black
Dimensions	3W x 7.6H x 1D cm (1.2" W x 3" H x 0.4" D)
Weight	20 g
Certification	CE, FCC 15.247 Type of Power Supply – Type C

Detectors



PMD5M

- Dual-element PIR sensor
- Super creep down-looking beam
- Fast and easy installation with integrated bracket
- Sensitivity level and detection energy control
- Multiple processing modes
- Temperature sensor

PMD3M

- Indoor single-optic wireless PIR motion detector
- Sensitivity level and detection energy control
- Temperature sensor

PMD75M

- Dual-optic wireless PIR sensors
- Advanced real pet-immunity
- Detection energy level control
- Temperature sensor
- Multiple processing modes



PMD5M



PMD3M



PMD75M

Technical Specifications

Specification	PMD5M	PMD3M	PMD75M
Wireless Type	GFSK two-way with frequency and encryption hopping		
Sensor Type	Dual rectangular element		Two dual-opposed infrared sensors
Coverage	110° - 12m (39 ft) x 12m (39 ft)		90° - 11m (36 ft) x 11m (36 ft); Center beams: 15m (49.2 ft)
Detection Speed	0.2m/s to 3.5m/s (0.6 ft/s to 11.5 ft/s)		
RF Frequency	868 (865.05 - 867.95) MHz or 914 (902.25 - 927.55) MHz May vary by region.		
RF Power	868 MHz up to +14 dBm radiated, 914 MHz up to +22 dBm in permitted countries		
Transmission Time	Less than 20 ms		
Supervision Time	20 minutes, 10 minutes (Default), and 3 minutes		
Status Indicators	Battery, temperature, TX/RX values		
Battery	1 x CR123 lithium 6+ years of battery life with normal usage	2 x AA lithium 6+ years of battery life with normal usage	3 x AAA lithium 6+ years of battery life with normal usage
Firmware Upgrade	Remotely over the air, via BlueEye		
Installation Environment	Indoor		
Operating Temperature	-20°C to 40°C (-4°F to 104°F)		
Auto Learn	Yes		
Colors	White, Grey		White
Dimensions	5.6W x 9.2H x 1.8D cm (2.2" W x 3.6" H x 0.7" D)	6.6W x 9.9H x 6.1D cm (2.6" W x 3.9" H x 2.4" D)	6.6W x 12.4H x 6.1D cm (2.6" W x 4.9" H x 2.4" D)
Weight	80 g	0.13 kg	0.16 kg
Certification	CE, EN 50131-2-2, EN 50131-6, EN 50131-5-3, Security Grade – 2, Environmental Class – II, FCC 15.247 Type of Power Supply – Type C		

Detectors

PMD37M

- Indoor/outdoor dual-optic wireless PIR detector
- Pet-immunity
- Sensitivity level control
- Anti-mask sensitivity adjustments
- Temperature sensor

PMD85M

- Outdoor dual-optic PIR motion detector
- Advanced pet-immunity
- Sensitivity level and detection energy level control
- Changeable lenses
- Impact-resistant and temperature-resistant casing
- Temperature sensor
- Multiple processing modes



PMD37M



PMD85M

Technical Specifications

Specification	PMD37M	PMD85M
Wireless Type	GFSK two-way with frequency and encryption hopping	
Sensor Type	2 dual elements	Dual element infrared (x2)
Coverage	88.5° - 11m (36 ft) x 11m (36 ft); Center beams: 15m (49.2 ft)	90° - 11m (36 ft) x 11m (36 ft)
Detection Range	PET Immunity mode: 7.5m x 2m (25 x 7 ft)	90° - 11m (36 ft) x 11m (36 ft)
RF Frequency	868 (865.05 - 867.95) MHz or 914 (902.25 - 927.55) MHz May vary by region.	
RF Power	868 MHz up to +14 dBm radiated, 914 MHz up to +22 dBm in permitted countries	
Transmission Time	Less than 20 ms	
Supervision Time	20 minutes, 10 minutes (Default), and 3 minutes	
Status Indicators	Battery, temperature, TX/RX values	
Battery	2 x AA lithium 6+ years of battery life with normal usage	3 x AA lithium 6 + years of battery life with normal usage
Installation Environment	Outdoor	Indoor/Outdoor
Firmware Upgrade	Remotely over the air, via BlueEye	
Operating Temperature	-20°C to +40°C (-4°F to 104°F)	
Auto Learn	Yes	
Colors	White	
Dimensions	6.1W x 12.3H x 4.3D cm (2.4" W x 4.8" H x 1.7" D)	8.3W x 17.5H x 7.4D cm (3.29" W x 6.9" H x 2.9" D)
Weight	0.17 kg	0.27 kg
Certification	CE, EN 50131-2-2, EN 50131-6, EN 50131-5-3, Security Grade – 2, Environmental Class – IVA, FCC 15.247 Type of Power Supply – Type C	

Detectors

PMD780M

- Outdoor dual-side detection
- Reports as single or dual units to separate zones
- Sensitivity level control
- Multiple processing modes
- Temperature sensor



PMD780M

Technical Specifications

Specification	Description
Wireless Type	GFSK two-way with frequency and encryption hopping
Sensor Type	4 x dual low-noise rectangular elements
Coverage	3m (9.8ft) – 12m (39.37ft) on each side at 1.5m / 4.9 ft. height
Detection Speed	0.2m / sec.– 4m/sec. (0.6 ft/sec.– 13.1 ft /sec.)
RF Frequency	868 (865.05 - 867.95) MHz or 914 (902.25 - 927.55) MHz May vary by region.
RF Power	868 MHz up to +14 dBm radiated, 914 MHz up to +22 dBm in permitted countries
Humidity Range	95% max.
Transmission Time	Less than 20 ms
Supervision Time	20 minutes, 10 minutes (Default), and 3 minutes
Status Indicators	Battery, temperature, TX/RX values
Battery	3 x AA lithium, 6+ years of battery life with normal usage
Installation Environment	Outdoor
Firmware Upgrade	Remotely over the air, via BlueEye
Operating Temperature	-20°C to +40°C (-4°F to 104°F)
Auto Learn	Yes
Colors	White
Dimensions	11W x 21H x 7D cm (4.3" W x 8.2" H x 2.7" D)
Weight	0.45 kg
Certification	CE, EN 50131-2-2, EN 50131-6, EN 50131-5-3, Security Grade – 2, Environmental Class – IVA, FCC 15.247 Type of Power Supply – Type C

Sound Devices

CM1M

- Audio player for door chime entry exit and alarm
- Adjustable ringtones and volume levels
- 100-260 VAC, wall socket pluggable
- Easy installation
- 6 zone chime alarm tones
- 8 burglary alarm tones



CM1M

Technical Specifications

Specification	Description
Wireless Type	GFSK two-way with frequency and encryption hopping
RF Frequency	868 (865.05 - 867.95) MHz or 914 (902.25 - 927.55) MHz range May vary by region.
RF Power	868 MHz up to +14 dBm radiated, 914 MHz up to +22 dBm in permitted countries
Number of Ringtones	Zone chime alarm tones: 6 Burglary alarm tones: 8 Fire alarm tones: 8 (same melodies as burglary alarm tones) Entry tone: 1 Exit tone: 1 (same as entry tone) Panic alarm tone: 8 (same melodies as burglary alarm tones)
Supervision Time	20 minutes, 10 minutes, and 3 minutes
Installation Environment	Indoor
Firmware Upgrade	Remotely over the air, via BlueEye
Input Voltage	AC110 ~260V, 50/60Hz
Operating Temperature	-30°C to +70°C (-22°F to +158°F)
Colors	White
Dimensions	8.4W x 8.4H x 4.8D cm (3.3" W x 3.3" H x 1.9" D)
Weight	82 g
Certification	CE, FCC 15.247

Sound Devices

SR230M and SR250M

- 100 dB wireless siren with integrated strobe light
- Weather-resistant
- SR230M lens color options – red, blue, and amber
- SR250M lens color options – red, blue, clear, and amber
- IP rating – IP54
- Temperature sensor
- Powered 12V



SR230
M



SR250
M

Technical Specifications

Specification	SR230M	SR250M
Power Supply Input	-	8-16V AC / 9-20V DC
Current Consumption	Standby: 5.75 μ A, Maximum: 450 mA	Sleep: 22 μ A, Standby: 130 μ A, Alarm: 550 mA
Wireless Type	GFSK two-way with frequency and encryption hopping	
RF Frequency	868 (865.05 - 867.95) MHz or 914 (902.25 - 927.55) MHz. May vary by region.	
RF Power	868 MHz up to +14 dBm radiated, 914 MHz up to +22 dBm in permitted countries	
Status Indicators	Battery, temperature, TX/RX values	
Battery	3 x C alkaline, up to 5 years of battery life (due to the risk of leakage from alkaline batteries)	3 x D alkaline, up to 5 years of battery life (due to the risk of leakage from alkaline batteries)
Siren	100 dBA or more (1 meter), Piezo siren	
Transmission Time	Less than 20 ms	
Supervision Time	20 minutes, 10 minutes (Default), and 3 minutes	
Installation Environment	Outdoor	
Firmware Upgrade	Remotely over the air, via BlueEye	
Operating Temperature	-20°C to +50°C (-4°F to 122°F)	
Auto Learn	Yes	
Colors	White	
Dimensions	13.4W x 21.2H x 5.1D cm (5.3" W x 8.3" H x 2" D)	
Weight	0.55 kg	1.21 kg
Certification	CE, EN 50131-4, EN 50131-6, EN 50131-5-3, Security Grade – 2, Environmental Class – IV, FCC 15.247 Type of Power Supply – Type C	

Remote Controls

REM28M, REM25M, and REM2M

- Water resistant – Built to withstand splashes and moisture
- Sleek, durable – Combines modern aesthetics with a durable construction
- System status display – displays system status for real-time updates at a glance
- Backlit buttons – easy to see even in dark or low-light conditions
- Visual and audible feedback
- Includes 1 x 3V lithium battery (CR2032) for immediate use

REM101M

- Haptic feedback
- Water resistant
- Multi color selection
- Bracket for fixed installation
- Includes 1 x CR2345 lithium battery



REM28M



REM25M



REM2M



REM101M

Technical Specifications

Specification	REM28M	REM25M	REM2M	REM101M
Wireless type	GFSK two-way with encryption hopping			
RF Frequency	868 (865.05 - 867.95) MHz or 914 (902.25 - 927.55) MHz range May vary by region.			
RF power	868 MHz up to +14 dBm radiated, 914 MHz up to +22 dBm in permitted countries			
Transmission Time	Less than 20 ms			
Battery	One 3V lithium battery (CR2032)		One CR2354 lithium battery	
Operating Temperature	-20°C to 50°C (-4°F to 122°F)			
Colors	Black, White			Black, White, Grey
Dimensions	3.3W x 7.4H x 1.4D cm (1.2W x 2.9H x 0.55D in.)	3.9W x 7.2H x 1.2D cm (1.5W x 2.8H x 0.5D in.)	3.9W x 7.2H x 1.2D cm (1.5W x 2.8H x 0.5D in.)	6.2H x 3.7W x 1.8D cm (2.4" H x 1.4" W x 0.7" D)
Weight	30 g	30 g	20 g	25 g
Certification	CE, FCC 15.247 Type of Power Supply – Type C			CEW, FCC, 15.247

Accessories

EG30

- Gigabit PoE+ Injector 30W
- 110-240V AC

PA12V/1A

- 12V/1A AC to DC power supply adapter
- 110-240V AC



EG30



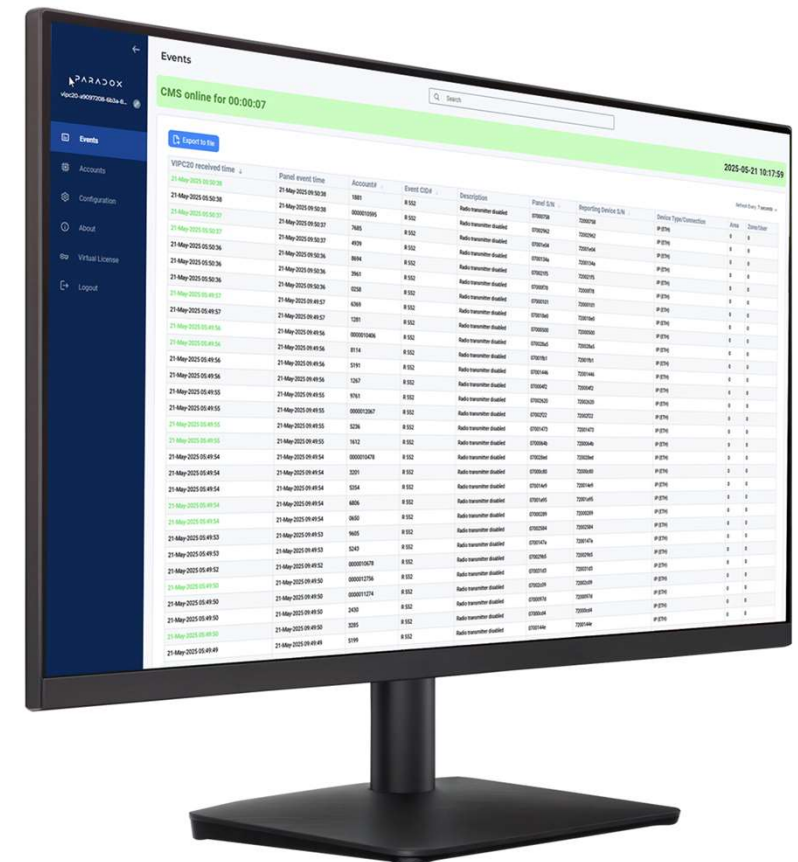
PA12/1A



IP to CMS Converter

VIPC20

- Installed on PC with a Linux environment
- Support the most well-known hypervisors
- Converts Paradox IP reporting protocol to CMS CID and MLR2-DG formats
- Can monitor 20,000 accounts at 10-minute supervision or 10,000 accounts at 90-second supervision
- Secured and encrypted RSA2K KEY MQTT
- 80,000 events buffer with alarm priority
- Free 5 reporting accounts
- License purchased directly by the installer at the dealer portal (www.paradoxdealer.com)



VIPC20

VIPC20 Technical Specifications

Specification	Details
Compatibility	M head units, legacy panels manufactured after 2012 using IP180, PCS265V8 (LTE), IP150+MQ, IP150M FW 6.0 or higher.
Account Capacity	20,000 for normal or long supervision, 10,000 for high supervision
Supervision	Long: 20 minutes, 10 minutes, Default: 5 minutes, Short: 90 seconds
Supervision Message	Account Offline online status reported to CMS.
Replacement Recovery time	Auto recovery VIPC20 replacement within five minutes. All accounts should be restored.
Encryption Type	AES 128-bit
Communication Protocol	CID via Sur-Gard MLR2-DG or Ademco

Hardware IP to CMS Converter

IPC10

- Supports up to 5,000 accounts with default 5-minute supervision, or 3,500 accounts at 90-second supervision
- No registration for reporting devices
- 5-minute recovery time in case of converter replacement
- 4 supervision profiles – 90 seconds, 5, 10, or 20 minutes
- One single Ethernet front connection with PoE
- 10,000 event buffers, if CMS is down
- Rack-mount 19" (1U)
- Easy and simple-to-use UI



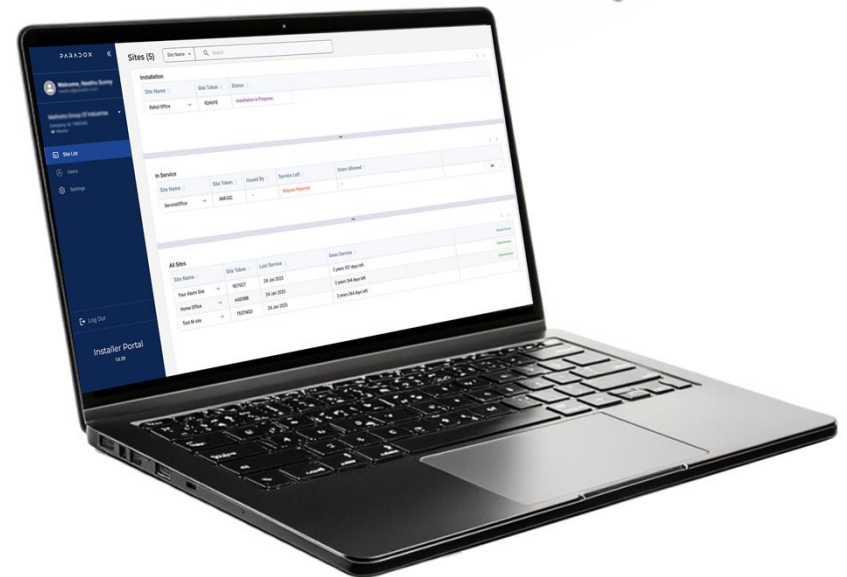
IPC10 Technical Specifications

Specification	Details
Compatibility	M head units, legacy panels manufactured after 2012 using IP180, PCS265V8 (LTE), IP150+MQ FW 6.0 or higher
Input Voltage	PoE, 44-57 V DC, 8W, max, Class 2 device
Account Capacity	5,000 for normal or long supervision, 3,000 for high supervision
Supervision	Long: 20 minutes, 10 minutes; Default: 5 minutes; Short: 90 seconds
Supervision Message	Account offline/online status reported to CMS
Internal Battery Backup	Up to 20 hours backup, Lithium-ion Note: Internal batteries are rechargeable only and are not replaceable by the user.
Internal Battery Input Voltage	7.4 VDC nom. 5000 mAh 37Wh from two internal rechargeable Lithium batteries (3.7Vdc nom. 5000 mAh 18.5Wh) connected in series
Operating Temperature	0°C to 40°C (32°F to +104°F)
Replacement Recovery	Auto recovery IPC10 replacement within five minutes. All accounts should be restored.
Encryption Type	AES 128-bit
Communication Protocol	CID via Sur-Gard MLR2-DG or Ademco
Dimensions	48.26 x 20.3 x 4.2 cm (19 x 8 x 1.65 in) Fits 19" Rack (1U)
Weight	3.41 Kg

Portal

Service Company Portal

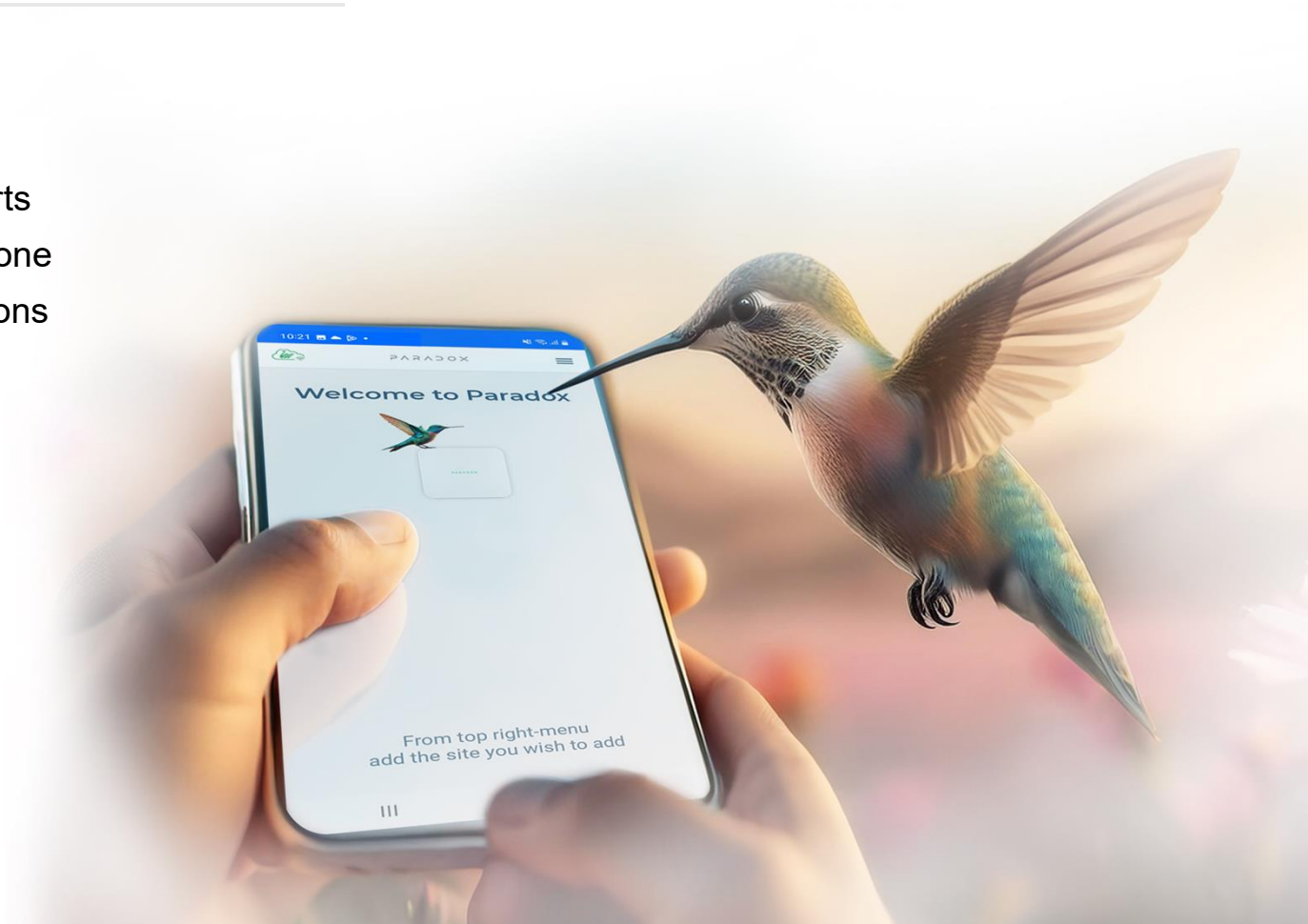
- Dedicated platform designed for professional installers
- Provides a centralized interface to manage their assigned Paradox sites
- Create different user profiles:
 - Company Owner
 - Service Admin
 - Technician (Installers)
- Service Company Owner and Master can do the following:
 - View the sites
 - Invite other technicians
 - Revoke access
 - Grant access to technicians
 - Perform batch payments
 - Purchase VIPC20 licenses



Mobile Application

BlueEye App

- Allows you to control your security system
- Receive real-time notifications for alarm alerts
- Arm/disarm your system from your smartphone
- Multi-user access with customized permissions
- User-friendly interface
- Easy setup and configuration
- Free mobile app



Q & A



Now it's your turn.
Have any questions?
Ask away!





PARADOX

